

Digital Platform Modelisation

Authors

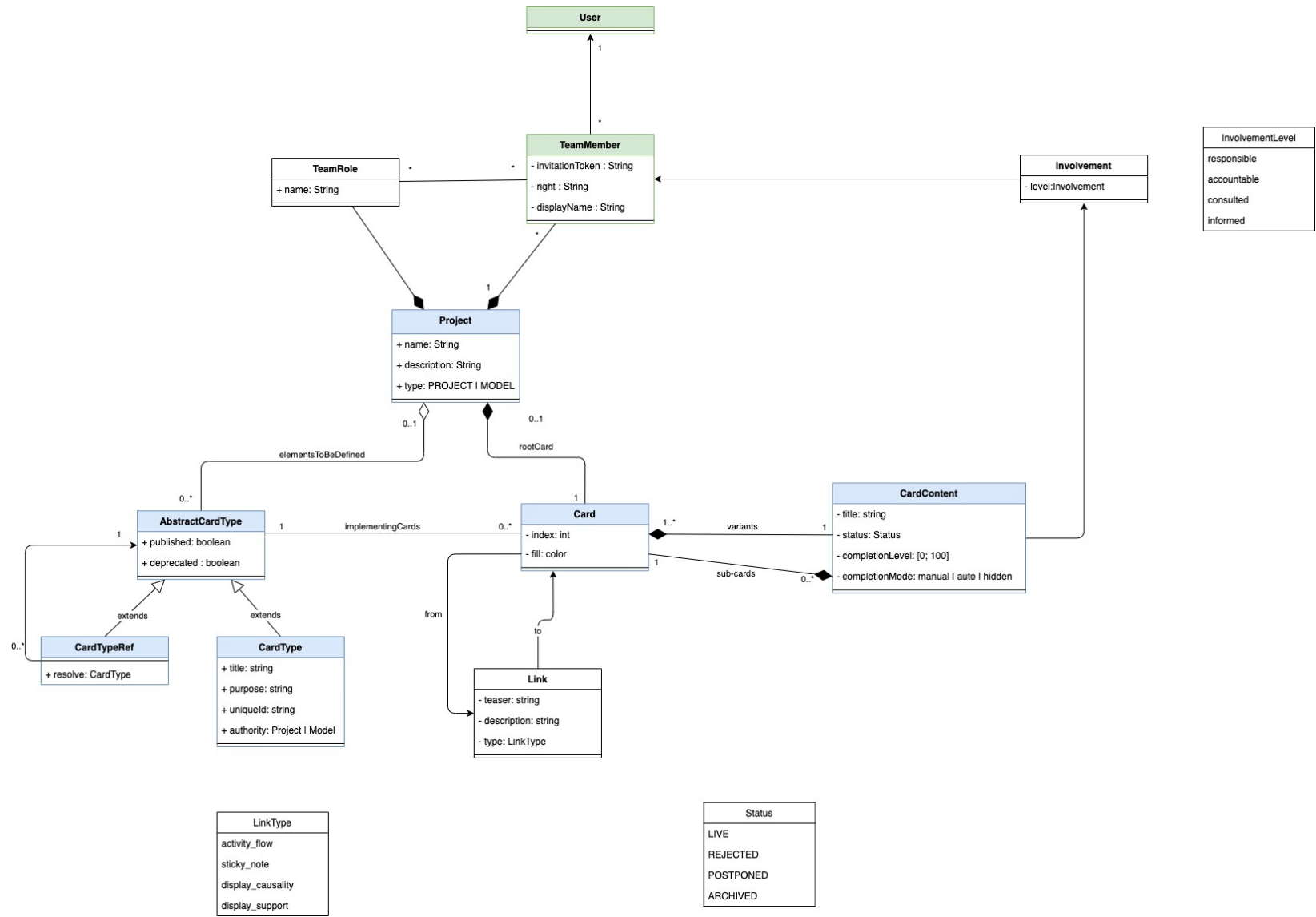
Maxence Laurent, Sandra Monnier, Dominique Jaccard

Publications Date

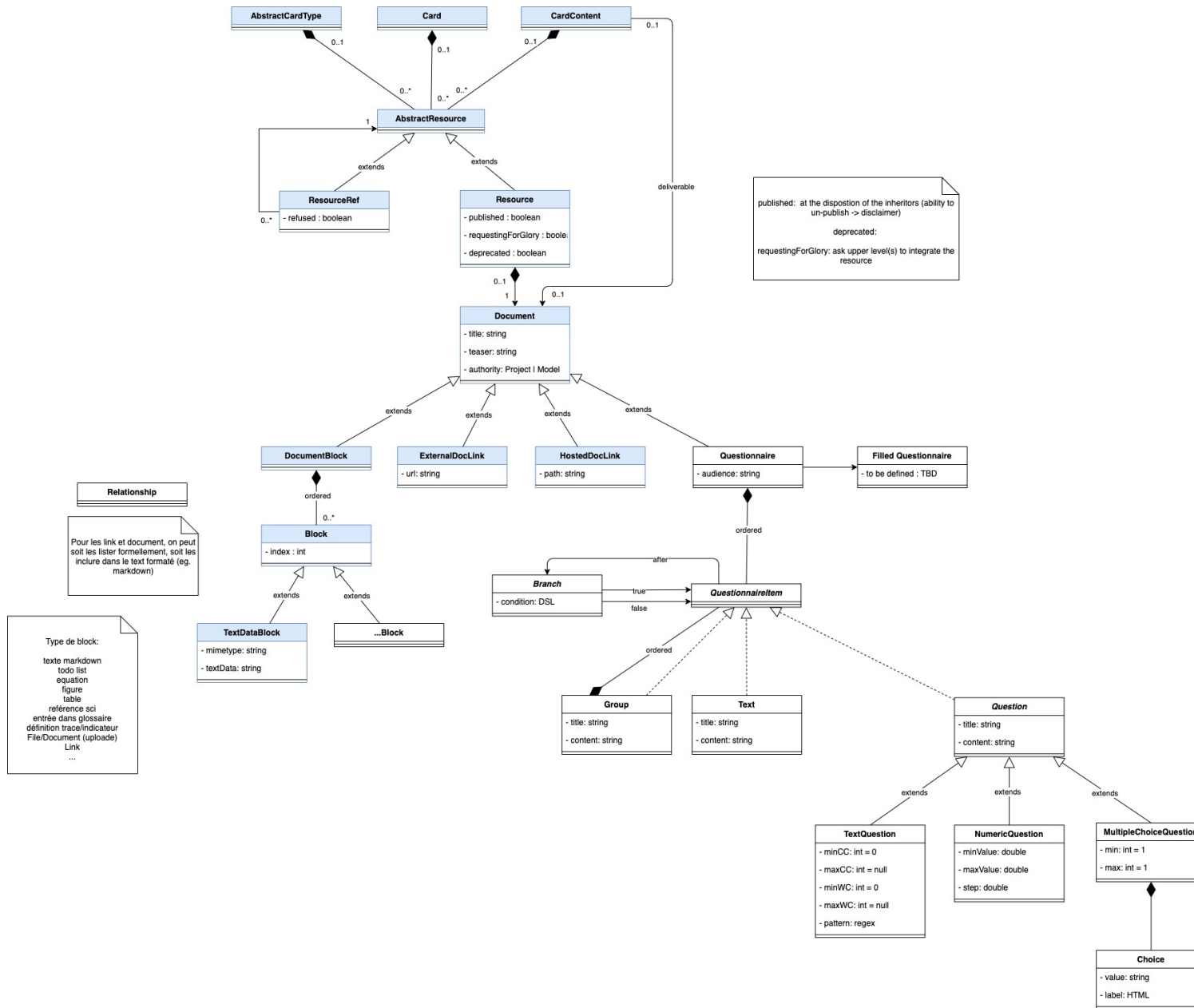
- v0.3 August 2021 (splitted class diagrams, CRUD Conditions)
- V0.2 March 2021 (modified class diagram)
- V0.1 : December 2020 (change tracking, data collection and storage process, class diagram)

The co.LAB project is founded by the Swiss National Science Foundation (SNF) in the frame of the NRP 77 programme "Digital Transformation"

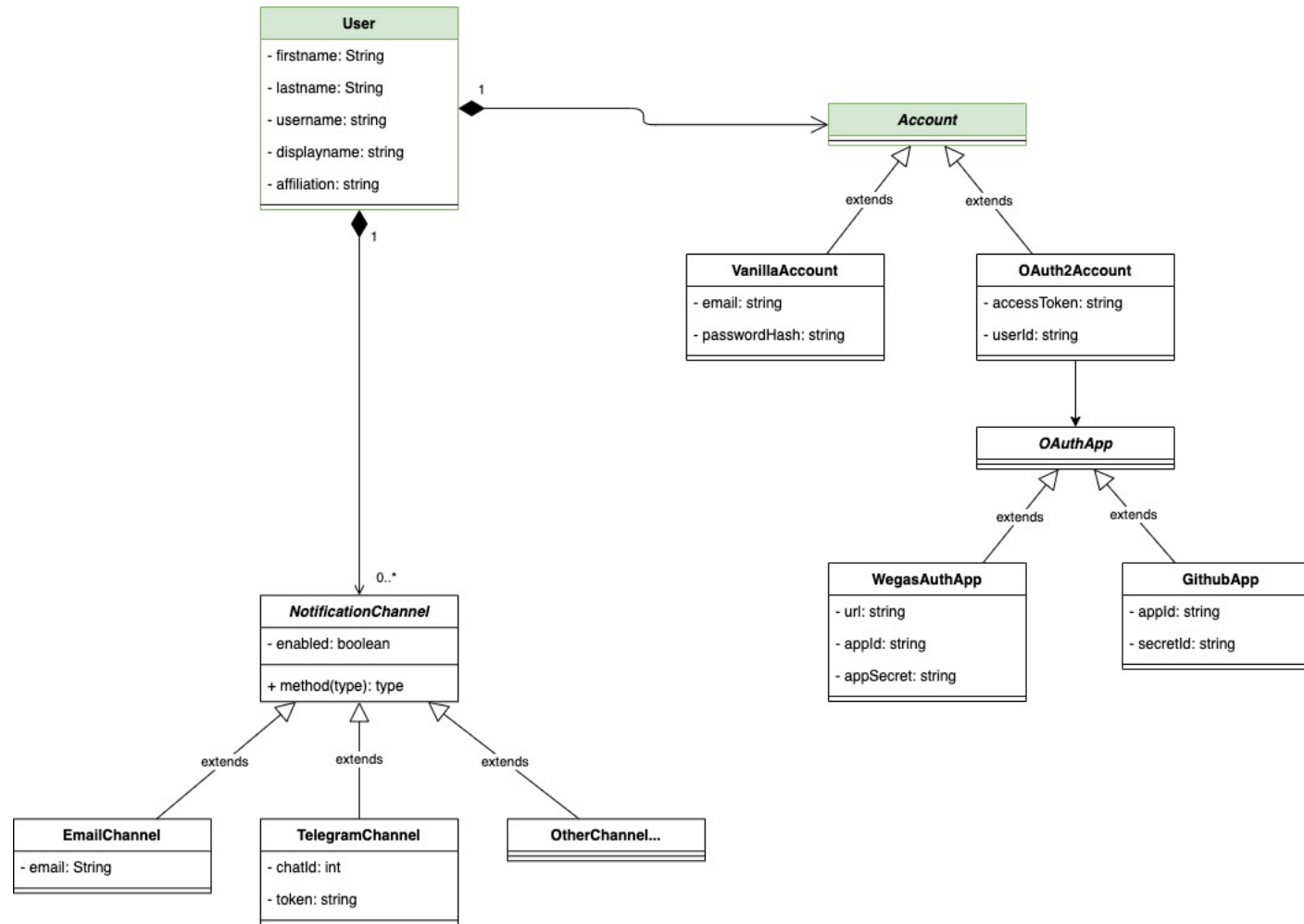
Core Cards Structure



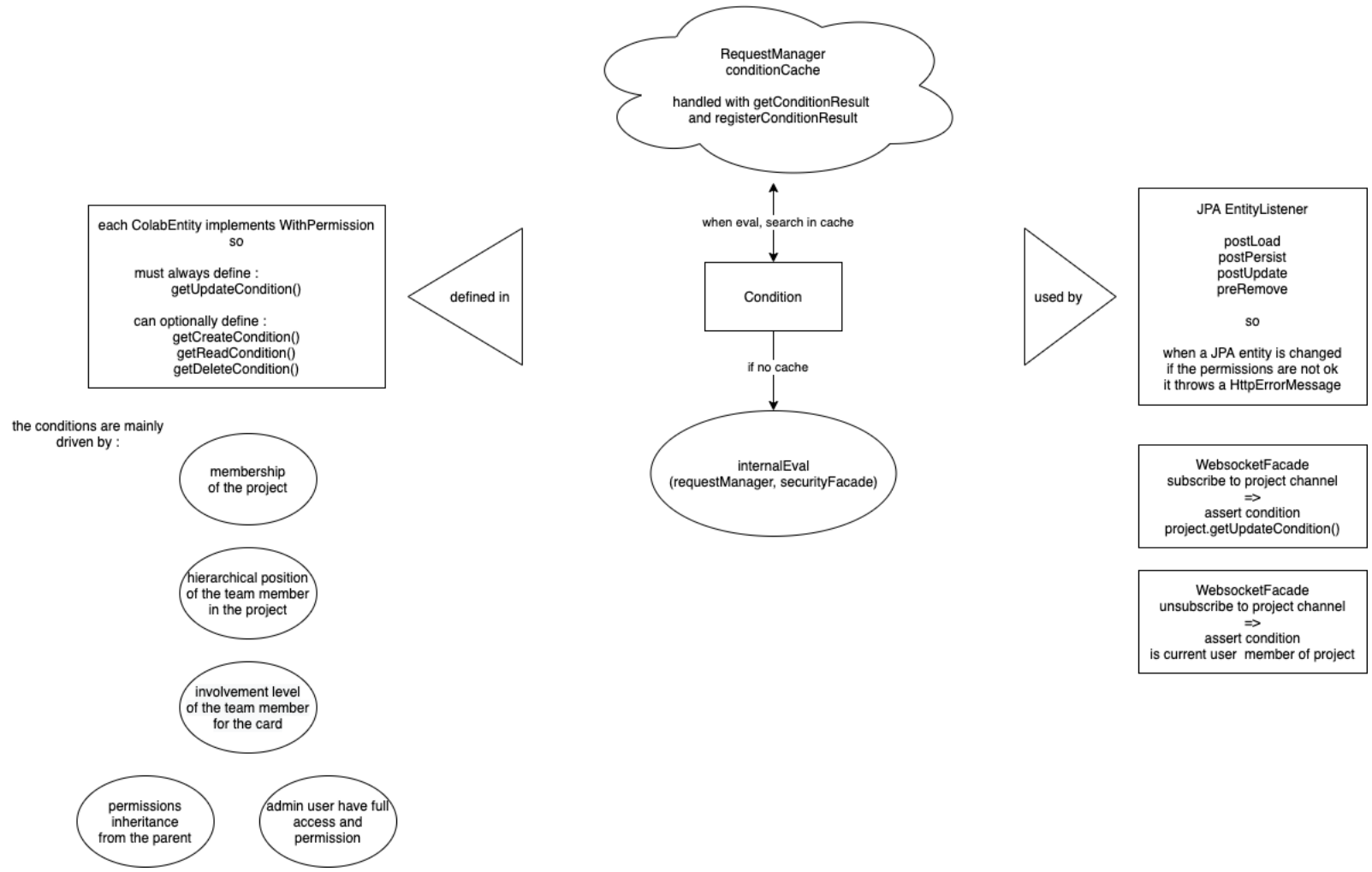
Collaborative Workspace and Content Management



Users Management



CRUD Conditions (I)



CRUD Conditions (II)

hierarchical position
of a team member
in a project

can be

- OWNER : owners has full read/write access to the whole project, bypassing any access control
- LEADER : like Intern but can manage team and roles
- INTERN : interns have default read/write access to everything but team/roles management
- EXTERN : externs do not have access to anything unless explicit authorization

involvement level

can be

- RESPONSIBLE : Responsible do the work (read/write access)
- ACCOUNTABLE : The one who validate the work (read/write access)
- CONSULTED_READWRITE : Consulted with read/write access
- CONSULTED_READONLY : Consulted with read-only access
- INFORMED_READWRITE : Informed with read/write access. It's the default mode.
- INFORMED_READONLY : Informed with read-only access
- OUT_OF_THE_LOOP : Access denied

can be defined

- for an access control :
 - card x team member
 - card x role
- in a card

is defined

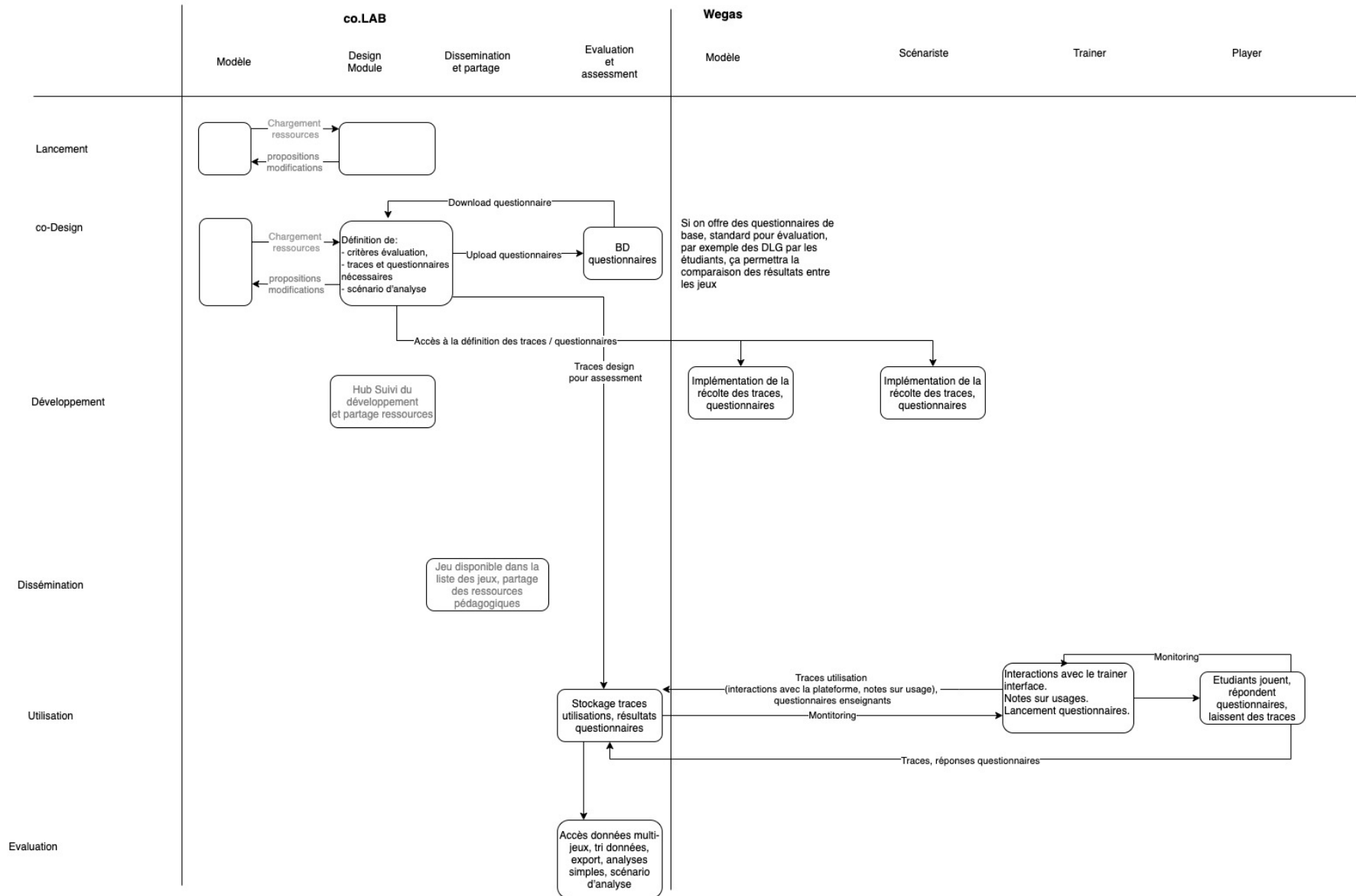
- for each hierarchical position

for a card and a team member, the involvement level is defined by
(take the first that is filled)

- the involvement level of the ACL for the team member on the card
 - the involvement level of the most powerful ACL for the team member's roles on the card (eventual trick inside for CONSULTED_READWRITE)
 - the card default involvement level
 - the parent card's involvement level
 - the member 's hierarchical position's involvement level
-

Data collection and storage process

Processus Evaluation



Changes Tracking Management System

MicroChange
- user: User
- timestamp: Timestamp
- patch: String
- targetClass: String
- targetId: long

